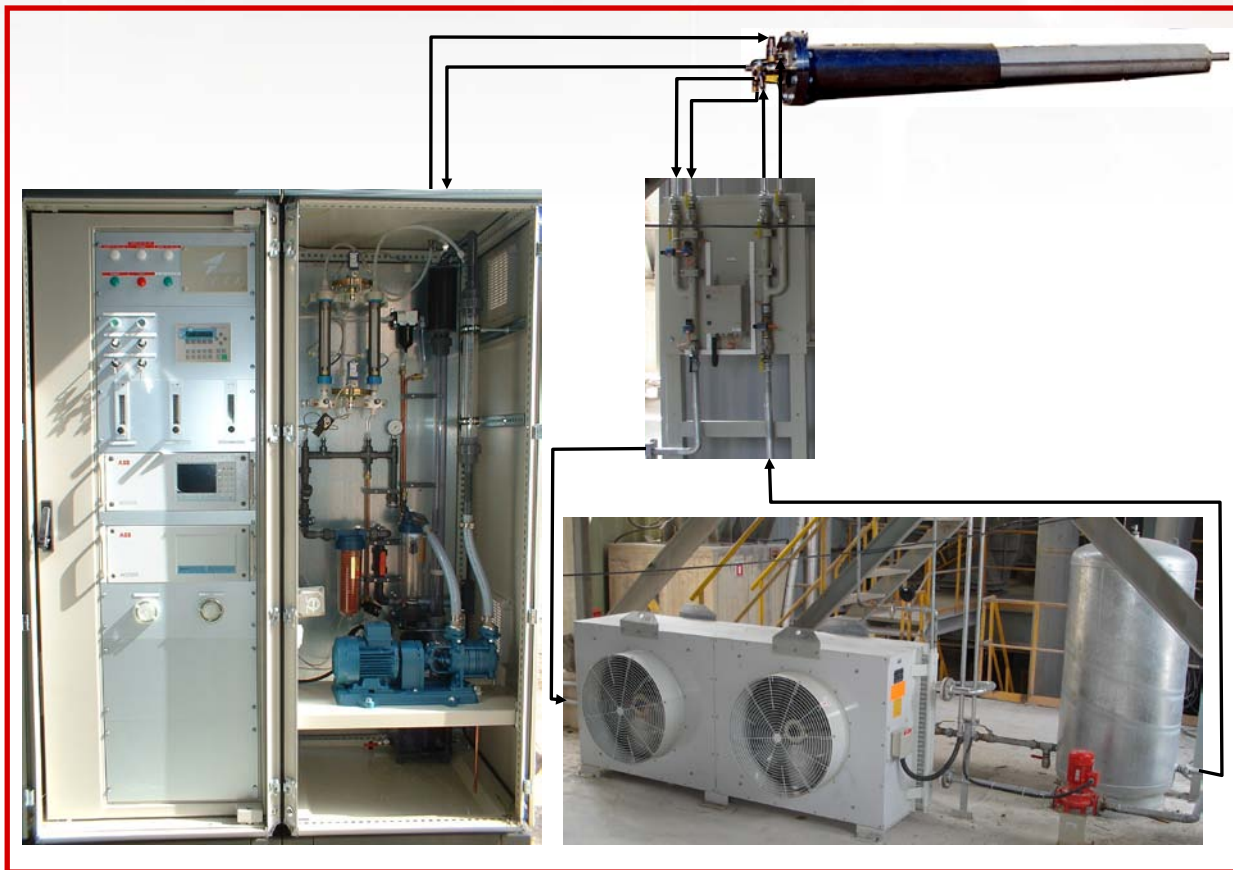


# GAS SAMPLING & ANALYSING SYSTEM AGO2



**THIS SYSTEM ALLOWS THE OPTIMIZATION OF  
THE KILN OPERATION**

**Precise control of the CO, O<sub>2</sub>, CO<sub>2</sub>, CH<sub>4</sub>, and NO<sub>x</sub>  
contents in the fume box chamber**

## ADVANTAGES

Automatic **on-line** equipment working on a **continuous basis**

Output information used to control and **optimize** the **burning operations**, typically:

- **Energy savings** when controlling the **O<sub>2</sub>**
- Fast response to reduction conditions in the kiln so as to **avoid** the formation of **CO**
- Optimizing the **burning zone temperature** when controlling the **NOx**

**Water spray based system** (no need of any ceramic filter) ensuring a **higher reliability**

Programmable **self cleaning** of the sampling tube with **high pressure (8 bars) water pulses** which prevent any sample contamination from air purge

**High torque** sampling probe **extraction system**

**Integrated industrial water filtration**

**Adaptable** to any brand of **gas analyser** units

## PRINCIPLE

- Kiln inlet gas sampling
- Solid and liquid parts of the sample are separated from the gas itself
- Cleaning operations (cyclone separator, dryer, glass paper filter) of the gas
  - Transfer to the analyzers with a constant flow
  - Analysis results output to the plant

## PERFORMANCES

- **Sturdy sampling probe** (jacket  $\varnothing = 168$  mm)
- Working temperature of the sampling probe : **1 400 °C**
- Operating dust concentration : up to **2 Kg/m<sup>3</sup>**
- **Liquid ring pump** (sampling flow rate of **1800 l/h**) requires **no maintenance** and allows a **very short response time** (only a few seconds)
- **High capacity** (2500 l/h) **closed circuit probe cooling** system (water T° < 65°C)
  - **Simultaneous** measurement of **4 gas**
  - **2 operating modes**: Automatic - Calibration

## SPECIFICATIONS

- |            |         |   |
|------------|---------|---|
| • Height : | 2080 mm |   |
| • Depth :  | 812 mm  | Power supply: any from 400 to 600 V; 50-60 Hz |
| • Length : | 1400 mm |   |
| • Weight : | 500 kg  | Location: close to the fume box chamber       |

*ITECA reserves the right to modify its products without any prior notification*